

London's riverside - past, present, future

Richard Brown, Greater London Authority

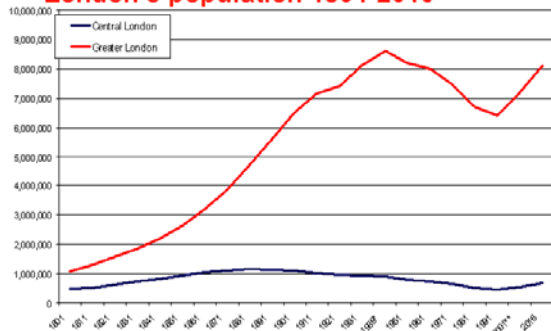
Harbour Business Forum Lunch - 20.09.05



GREATERLONDONAUTHORITY



London's population 1801-2016



GREATERLONDONAUTHORITY

London 2004

- Population rising from 7.4-8.2 million
- 300 languages and more every year
- Persistent inner city deprivation
- Affordable housing shortage
- Commitment to sustainable growth
- GDP of a small country and major centre for financial and creative sectors

Greater London Authority

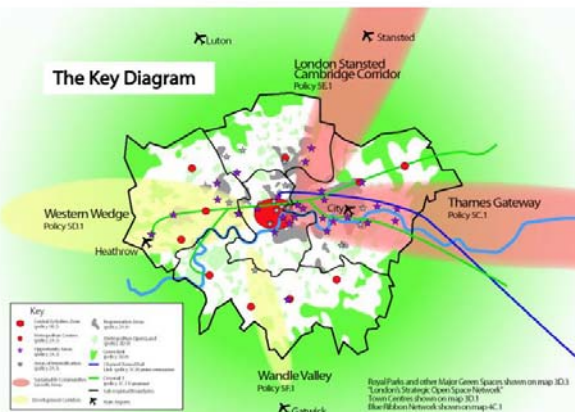
- **Mayor with executive power**
 - Strategies: spatial development, waste management, culture, noise, biodiversity, air quality, economic development, transport
 - Control over economic development and transport
 - Veto over strategic planning applications
- **London Assembly - 25 members**
 - Scrutinise and agree budgets

GREATERLONDONAUTHORITY

“An exemplary sustainable world city”

The London Plan, 2004

GREATER **LONDON** AUTHORITY



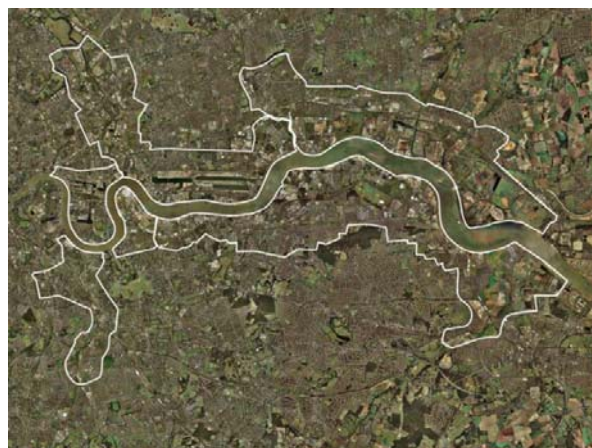
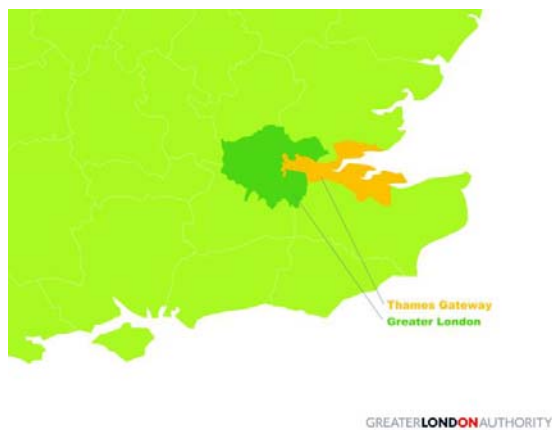
GREATER LONDON AUTHORITY

North Bank of the Thames

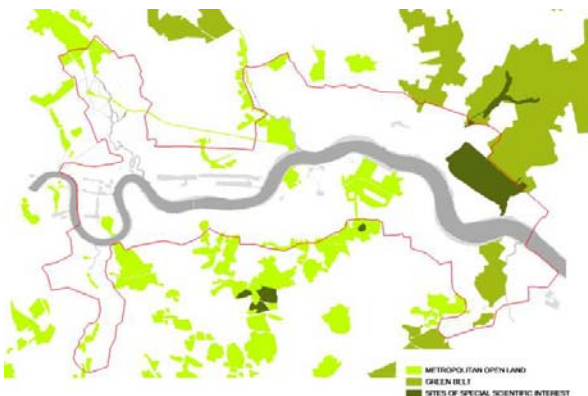


South Bank of the Thames

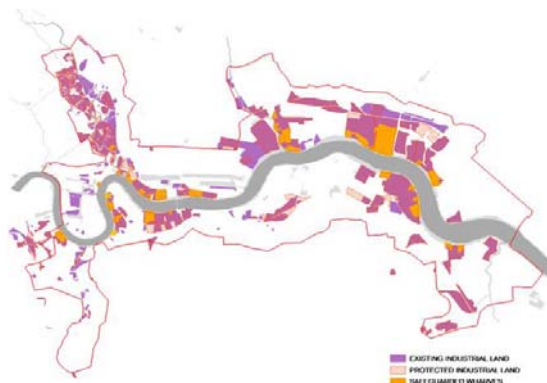




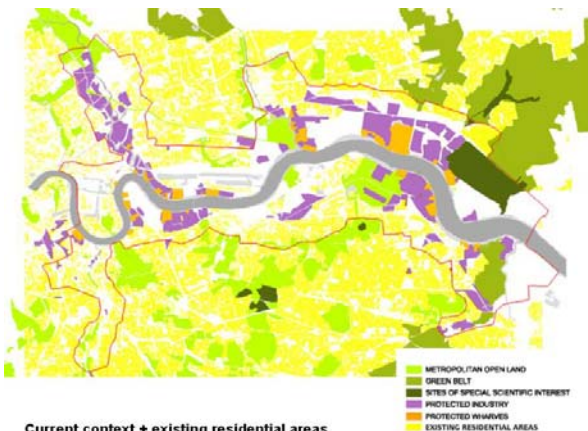
Thames Gateway Population Density 2001



Current context: protected open spaces



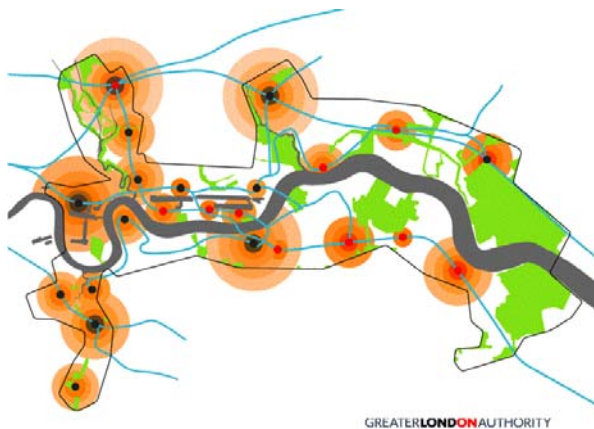
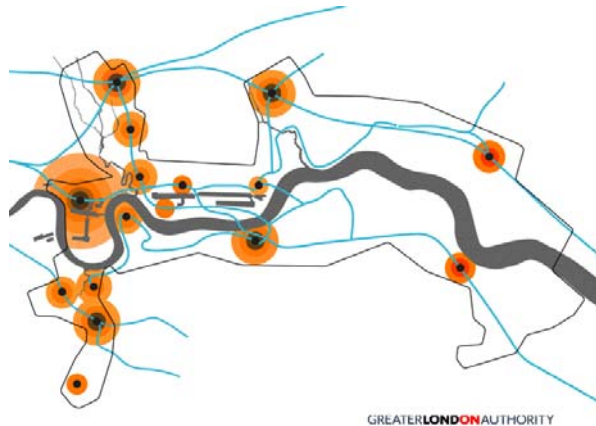
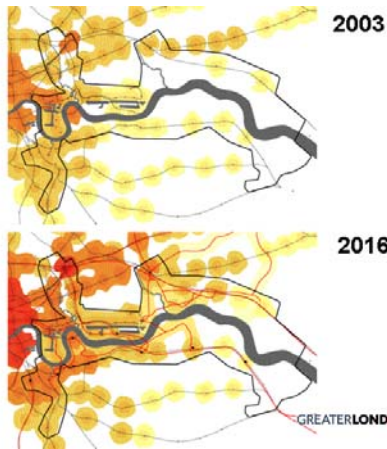
Current context: existing + protected industrial land



Current context + existing residential areas

Institutional architecture

- Mayor of London leading partnership of key regeneration agencies
- Government commitment to 'sustainable communities' (£200m pa)
- Audit of housing site availability (60k, 90k, more?)
- Framework of principles for development and phasing
- Detailed costing of necessary investment for sustainable development
- Design framework



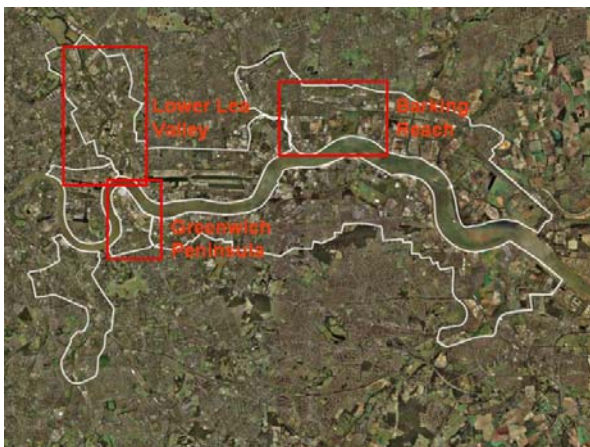


GREATER LONDON AUTHORITY



GREATER LONDON AUTHORITY







Greenwich Peninsula





Building a new 'city within a city'

- Learning the lessons of the past
- Comprehensive, inclusive and managed change
- Balancing competing demands
- New approaches to planning and partnership
- Understand the scale and take the long-term view